

## Product datasheet for **TA330874**

### GTF2H2C Rabbit Polyclonal Antibody

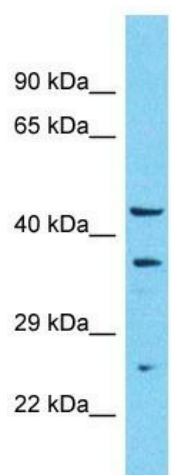
#### Product data:

Product Type:	Primary Antibodies
Applications:	WB
Recommended Dilution:	WB
Reactivity:	Human
Host:	Rabbit
Isotype:	IgG
Clonality:	Polyclonal
Immunogen:	The immunogen for Anti-GTF2H2C antibody is: synthetic peptide directed towards the N-terminal region of Human GTF2H2C. Synthetic peptide located within the following region: HLYVVDGSRMEDQDLKPNRLCTKLLEYFVEEYFDQNPISQIGIIVT
Formulation:	Liquid. Purified antibody supplied in 1x PBS buffer with 0.09% (w/v) sodium azide and 2% sucrose.
Conjugation:	Unconjugated
Storage:	Store at -20°C as received.
Stability:	Stable for 12 months from date of receipt.
Predicted Protein Size:	37 kDa
Gene Name:	GTF2H2 family member C
Database Link:	<a href="#">NP_001092198</a> <a href="#">Entrez Gene 728340 Human</a> <a href="#">Q6P1K8</a>
Background:	The function of this protein remains unknown.
Synonyms:	GTF2H2C_2
Note:	Dog: 100%; Pig: 100%; Rat: 100%; Horse: 100%; Human: 100%; Mouse: 100%; Bovine: 100%; Rabbit: 100%; Guinea pig: 100%; Zebrafish: 86%
Protein Families:	Druggable Genome



[View online »](#)

## Product images:



Host: Rabbit

Target Name: GTF2H2C

Sample Tissue: 293T Cell Lysate

Antibody Dilution: 1.0µg/ml

Host: Rabbit; Target Name: GTF2H2C; Sample  
Tissue: 293T Whole Cell lysates; Antibody  
Dilution: 1.0ug/ml