

## Product datasheet for **TA330873**

### GPR89A Rabbit Polyclonal Antibody

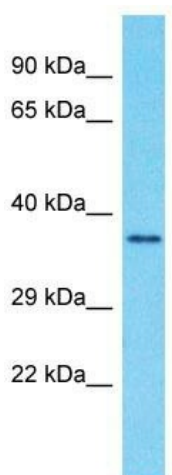
#### Product data:

Product Type:	Primary Antibodies
Applications:	WB
Recommended Dilution:	WB
Reactivity:	Human
Host:	Rabbit
Isotype:	IgG
Clonality:	Polyclonal
Immunogen:	The immunogen for Anti-GPR89A antibody is: synthetic peptide directed towards the C-terminal region of Human GPR89A. Synthetic peptide located within the following region: EYRTIITEVLGELQFNFYHRWFDVIFLVSALSSILFLYLAHKQAPEKQMA
Formulation:	Liquid. Purified antibody supplied in 1x PBS buffer with 0.09% (w/v) sodium azide and 2% sucrose. <i>Note that this product is shipped as lyophilized powder to China customers.</i>
Conjugation:	Unconjugated
Storage:	Store at -20°C as received.
Stability:	Stable for 12 months from date of receipt.
Predicted Protein Size:	36 kDa
Gene Name:	G protein-coupled receptor 89A
Database Link:	<a href="#">NP_001091082</a> <a href="#">Entrez Gene 653519 Human B7ZAQ6</a>
Background:	GPR89A is a nearly identical copy of the GPR89B gene.
Synonyms:	GPHR; GPR89; GPR89B; SH120; UNQ192
Note:	Rat: 100%; Human: 100%; Dog: 93%; Pig: 93%; Horse: 93%; Mouse: 93%; Bovine: 93%; Zebrafish: 93%; Guinea pig: 93%
Protein Families:	Druggable Genome, Transmembrane



[View online »](#)

## Product images:



Host: Rabbit  
Target Name: GPR89A  
Sample Tissue: Fetal Brain Lysate  
Antibody Dilution: 1.0 $\mu$ g/ml

Host: Rabbit; Target Name: GPR89A; Sample  
Tissue: Fetal Brain lysates; Antibody Dilution:  
1.0ug/ml