

## Product datasheet for **TA330872**

### FOXD4L1 Rabbit Polyclonal Antibody

#### Product data:

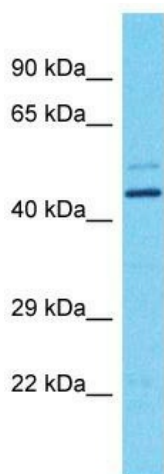
Product Type:	Primary Antibodies
Applications:	WB
Recommended Dilution:	WB
Reactivity:	Human
Host:	Rabbit
Isotype:	IgG
Clonality:	Polyclonal
Immunogen:	The immunogen for Anti-FOXD4L1 antibody is: synthetic peptide directed towards the N-terminal region of Human FOXD4L1. Synthetic peptide located within the following region: PRSTPQRSLRSDGEGDKIDVLGEEDEDEVEDEEEASQKFLEQSLQPG
Formulation:	Liquid. Purified antibody supplied in 1x PBS buffer with 0.09% (w/v) sodium azide and 2% sucrose.
Conjugation:	Unconjugated
Storage:	Store at -20°C as received.
Stability:	Stable for 12 months from date of receipt.
Predicted Protein Size:	44 kDa
Gene Name:	forkhead box D4-like 1
Database Link:	<a href="#">NP_036316</a> <a href="#">Entrez Gene 200350 Human</a> <a href="#">Q9NU39</a>
Background:	This gene is a member of the forkhead/winged-helix (FOX) family of transcription factors with highly conserved FOX DNA-binding domains. Members of the FOX family of transcription factors are regulators of embryogenesis and may play a role in human cancer. This gene lies in a region of chromosome 2 that surrounds the site where two ancestral chromosomes fused to form human chromosome 2. This region is duplicated elsewhere in the human genome, primarily in subtelomeric and pericentromeric locations, thus multiple copies of this gene have been found.
Synonyms:	bA395L14.1; FOXD5



[View online »](#)

Note: Human: 100%; Pig: 86%; Bovine: 79%; Rabbit: 79%

### Product images:



Host: Rabbit

Target Name: FOXD4L1

Sample Tissue: Fetal Brain Lysate

Antibody Dilution: 1.0µg/ml

Host: Rabbit; Target Name: FOXD4L1; Sample Tissue: Fetal Brain lysates; Antibody Dilution: 1.0ug/ml