

Product datasheet for **TA330871**

FAM166B Rabbit Polyclonal Antibody

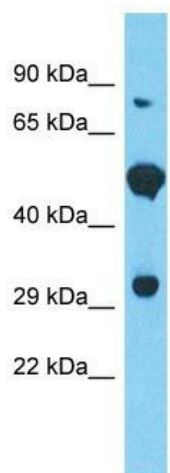
Product data:

| | |
|-------------------------|---|
| Product Type: | Primary Antibodies |
| Applications: | WB |
| Recommended Dilution: | WB |
| Reactivity: | Human |
| Host: | Rabbit |
| Isotype: | IgG |
| Clonality: | Polyclonal |
| Immunogen: | The immunogen for Anti-FAM166B antibody is: synthetic peptide directed towards the middle region of Human FAM166B. Synthetic peptide located within the following region: QFIFAKNCSQVWAEALSDFTHLHEKQGSEELPKEAKGRKDTEKDQVPEPE |
| Formulation: | Liquid. Purified antibody supplied in 1x PBS buffer with 0.09% (w/v) sodium azide and 2% sucrose. |
| Conjugation: | Unconjugated |
| Storage: | Store at -20°C as received. |
| Stability: | Stable for 12 months from date of receipt. |
| Predicted Protein Size: | 30 kDa |
| Gene Name: | family with sequence similarity 166 member B |
| Database Link: | NP_001093421 Entrez Gene 730112 Human A8MTA8 |
| Background: | The function of this protein remains unknown. |
| Synonyms: | MGC157846 |
| Note: | Human: 100%; Pig: 91%; Bovine: 91% |



[View online »](#)

Product images:



Host: Rabbit

Target Name: FAM166B

Sample Tissue: 293T Cell Lysate

Antibody Dilution: 1.0µg/ml

Host: Rabbit; Target Name: FAM166B; Sample Tissue: 293T Whole Cell lysates; Antibody Dilution: 1.0ug/ml