

Product datasheet for **TA330870**

SHISAL2B Rabbit Polyclonal Antibody

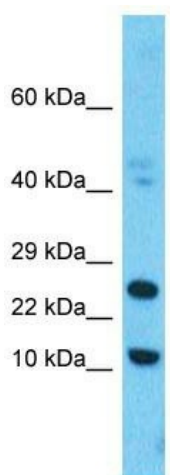
Product data:

Product Type:	Primary Antibodies
Applications:	WB
Recommended Dilution:	WB
Reactivity:	Human
Host:	Rabbit
Isotype:	IgG
Clonality:	Polyclonal
Immunogen:	The immunogen for Anti-FAM159B antibody is: synthetic peptide directed towards the C-terminal region of Human FAM159B. Synthetic peptide located within the following region: KPQRDLTGLKLQHLEASSTQEGKSNGKTKALNSNAASNATNETYYEADDI
Formulation:	Liquid. Purified antibody supplied in 1x PBS buffer with 0.09% (w/v) sodium azide and 2% sucrose. <i>Note that this product is shipped as lyophilized powder to China customers.</i>
Conjugation:	Unconjugated
Storage:	Store at -20°C as received.
Stability:	Stable for 12 months from date of receipt.
Predicted Protein Size:	17 kDa
Gene Name:	family with sequence similarity 159 member B
Database Link:	NP_001157914 Entrez Gene 100132916 Human A6NKW6
Background:	The function of this protein remains unknown.
Synonyms:	family with sequence similarity 159; member B; RGD1564672
Note:	Human: 100%



[View online »](#)

Product images:



Host: Rabbit
Target Name: FAM159B
Sample Tissue: 721_B Cell Lysate
Antibody Dilution: 1.0 μ g/ml

Host: Rabbit; Target Name: FAM159B; Sample
Tissue: 721_B Whole Cell lysates; Antibody
Dilution: 1.0ug/ml