

## Product datasheet for **TA330868**

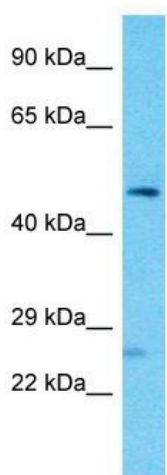
### NALF1 Rabbit Polyclonal Antibody

#### Product data:

Product Type:	Primary Antibodies
Applications:	WB
Recommended Dilution:	WB
Reactivity:	Human
Host:	Rabbit
Isotype:	IgG
Clonality:	Polyclonal
Immunogen:	The immunogen for Anti-FAM155A antibody is: synthetic peptide directed towards the C-terminal region of Human FAM155A. Synthetic peptide located within the following region: EGGEMTTTCRQCVEAYQDYDHHAQEKYEEFESVLHKYQLQSEEYSVKSCPED
Formulation:	Liquid. Purified antibody supplied in 1x PBS buffer with 0.09% (w/v) sodium azide and 2% sucrose.
Conjugation:	Unconjugated
Storage:	Store at -20°C as received.
Stability:	Stable for 12 months from date of receipt.
Predicted Protein Size:	50 kDa
Gene Name:	family with sequence similarity 155 member A
Database Link:	<a href="#">NP_001073865</a> <a href="#">Entrez Gene 728215 Human</a> <a href="#">B1AL88</a>
Background:	The function of this protein remains unknown.
Synonyms:	family with sequence similarity 155; member A; OTTHUMP00000018689
Note:	Dog: 100%; Rat: 100%; Human: 100%; Mouse: 100%; Bovine: 100%; Rabbit: 100%; Zebrafish: 90%


[View online »](#)

## Product images:



Host: Rabbit  
Target Name: FAM155A  
Sample Tissue: PANC1 Cell Lysate  
Antibody Dilution: 1.0µg/ml

Host: Rabbit; Target Name: FAM155A; Sample  
Tissue: PANC1 Whole Cell lysates; Antibody  
Dilution: 1.0ug/ml