

## Product datasheet for **TA330866**

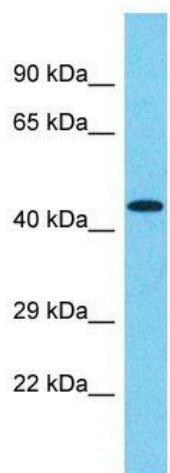
### FAM47E Rabbit Polyclonal Antibody

#### Product data:

Product Type:	Primary Antibodies
Applications:	WB
Recommended Dilution:	WB
Reactivity:	Human
Host:	Rabbit
Isotype:	IgG
Clonality:	Polyclonal
Immunogen:	The immunogen for Anti-FAM47E antibody is: synthetic peptide directed towards the middle region of Human FAM47E. Synthetic peptide located within the following region: KLEDTWAYCQDTRKGMKEPTKLLKKHSTQVYLGPSKKTSVSNAGQWLYEE
Formulation:	Liquid. Purified antibody supplied in 1x PBS buffer with 0.09% (w/v) sodium azide and 2% sucrose.
Conjugation:	Unconjugated
Storage:	Store at -20°C as received.
Stability:	Stable for 12 months from date of receipt.
Predicted Protein Size:	43 kDa
Gene Name:	family with sequence similarity 47 member E
Database Link:	<a href="#">NP_001130042</a> <a href="#">Entrez Gene 100129583 Human</a> <a href="#">Q6ZV65</a>
Background:	The function of this protein remains unknown.
Synonyms:	FLJ34958
Note:	Human: 100%; Mouse: 85%


[View online »](#)

## Product images:



Host: Rabbit  
Target Name: FAM47E  
Sample Tissue: 293T Cell Lysate  
Antibody Dilution: 1.0µg/ml

Host: Rabbit; Target Name: FAM47E; Sample  
Tissue: 293T Whole Cell lysates; Antibody  
Dilution: 1.0ug/ml