

Product datasheet for **TA330865**

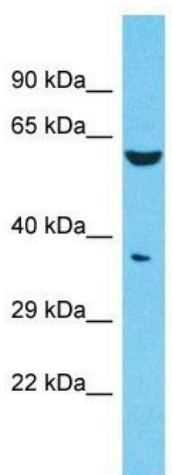
FAM47E Rabbit Polyclonal Antibody

Product data:

Product Type:	Primary Antibodies
Applications:	WB
Recommended Dilution:	WB
Reactivity:	Human
Host:	Rabbit
Isotype:	IgG
Clonality:	Polyclonal
Immunogen:	The immunogen for Anti-FAM47E antibody is: synthetic peptide directed towards the C-terminal region of Human FAM47E. Synthetic peptide located within the following region: RYGAWYLNPKLWKKQRVDEPLVDPEVSHKAQEENFKKELQEQSIFKKAMD
Formulation:	Liquid. Purified antibody supplied in 1x PBS buffer with 0.09% (w/v) sodium azide and 2% sucrose.
Conjugation:	Unconjugated
Storage:	Store at -20°C as received.
Stability:	Stable for 12 months from date of receipt.
Predicted Protein Size:	38 kDa
Gene Name:	family with sequence similarity 47 member E
Database Link:	NP_001130042 Entrez Gene 100129583 Human Q6ZV65
Background:	The function of this protein remains unknown.
Synonyms:	FLJ34958
Note:	Human: 100%; Bovine: 93%; Dog: 86%; Pig: 75%; Rat: 75%; Horse: 75%; Mouse: 75%; Rabbit: 75%



[View online »](#)

Product images:

Host: Rabbit

Target Name: FAM47E

Sample Tissue: 721_B Cell Lysate

Antibody Dilution: 1.0µg/ml

Host: Rabbit; Target Name: FAM47E; Sample
Tissue: 721_B Whole Cell lysates; Antibody
Dilution: 1.0ug/ml