

Product datasheet for **TA330863**

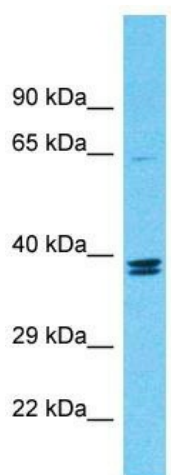
FAM23A (TMEM236) Rabbit Polyclonal Antibody

Product data:

Product Type:	Primary Antibodies
Applications:	WB
Recommended Dilution:	WB
Reactivity:	Human
Host:	Rabbit
Isotype:	IgG
Clonality:	Polyclonal
Immunogen:	The immunogen for Anti-TMEM236 antibody is: synthetic peptide directed towards the middle region of Human TMEM236. Synthetic peptide located within the following region: YPLRGSQKSSENGHIHSTSLQHIKTVTEQVRQSPENAASPQATNSTQVSQ
Formulation:	Liquid. Purified antibody supplied in 1x PBS buffer with 0.09% (w/v) sodium azide and 2% sucrose.
Conjugation:	Unconjugated
Storage:	Store at -20°C as received.
Stability:	Stable for 12 months from date of receipt.
Predicted Protein Size:	38 kDa
Gene Name:	transmembrane protein 236
Database Link:	NP_001092314 Entrez Gene 653567 Human Q5W0B7
Background:	The function of this protein remains unknown.
Synonyms:	bA16O1.2; bA16I21.2; FAM23A; FAM23B
Note:	Human: 100%; Pig: 75%; Horse: 75%; Bovine: 75%; Guinea pig: 75%
Protein Families:	Transmembrane


[View online »](#)

Product images:



Host: Rabbit

Target Name: TMEM236

Sample Tissue: COLO205 Cell Lysate

Antibody Dilution: 1.0µg/ml

Host: Rabbit; Target Name: TMEM236; Sample Tissue: COLO205 Whole Cell lysates; Antibody Dilution: 1.0ug/ml