

## Product datasheet for **TA330862**

### FAM18B2 (TVP23C) Rabbit Polyclonal Antibody

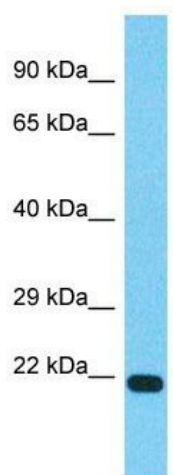
#### Product data:

Product Type:	Primary Antibodies
Applications:	WB
Recommended Dilution:	WB
Reactivity:	Human
Host:	Rabbit
Isotype:	IgG
Clonality:	Polyclonal
Immunogen:	The immunogen for Anti-TVP23C antibody is: synthetic peptide directed towards the middle region of Human TVP23C. Synthetic peptide located within the following region: RWWNHIDEDGKSHWVFESRKESSQENKTVSEAESRIFWLGLIACSVLWVI
Formulation:	Liquid. Purified antibody supplied in 1x PBS buffer with 0.09% (w/v) sodium azide and 2% sucrose.
Conjugation:	Unconjugated
Storage:	Store at -20°C as received.
Stability:	Stable for 12 months from date of receipt.
Predicted Protein Size:	22 kDa
Gene Name:	trans-golgi network vesicle protein 23 homolog C (S. cerevisiae)
Database Link:	<a href="#">NP_660344</a> <a href="#">Entrez Gene 201158 Human</a> <a href="#">Q96ET8</a>
Background:	The function of this protein remains unknown.
Synonyms:	FAM18B2
Note:	Dog: 100%; Pig: 100%; Rat: 100%; Horse: 100%; Human: 100%; Mouse: 100%; Bovine: 100%; Rabbit: 100%; Guinea pig: 100%; Zebrafish: 79%
Protein Families:	Transmembrane



[View online »](#)

### Product images:



Host: Rabbit  
Target Name: TVP23C  
Sample Tissue: MCF7 Cell Lysate  
Antibody Dilution: 1.0 $\mu$ g/ml

Host: Rabbit; Target Name: TVP23C; Sample Tissue: MCF7 Whole Cell lysates; Antibody Dilution: 1.0 $\mu$ g/ml