

Product datasheet for **TA330861**

Dux4 (DUX4L1) Rabbit Polyclonal Antibody

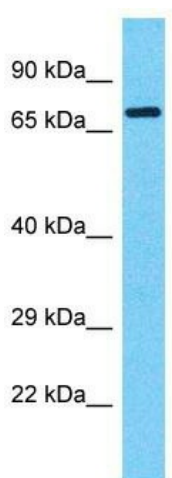
Product data:

Product Type:	Primary Antibodies
Applications:	WB
Recommended Dilution:	WB
Reactivity:	Human
Host:	Rabbit
Isotype:	IgG
Clonality:	Polyclonal
Immunogen:	The immunogen for Anti-DUX4 antibody is: synthetic peptide directed towards the middle region of Human DUX4. Synthetic peptide located within the following region: ACFERNPYPGIATRERLAQAIGIPEPRVQIWFQNSRQLRQHRRESRPW
Formulation:	Liquid. Purified antibody supplied in 1x PBS buffer with 0.09% (w/v) sodium azide and 2% sucrose. <i>Note that this product is shipped as lyophilized powder to China customers.</i>
Conjugation:	Unconjugated
Storage:	Store at -20°C as received.
Stability:	Stable for 12 months from date of receipt.
Predicted Protein Size:	75 kDa
Gene Name:	double homeobox 4 like 1
Database Link:	NP_149418 Entrez Gene 22947 Human
Background:	The function of this protein remains unknown.
Synonyms:	DUX10
Note:	Human: 100%; Dog: 77%



[View online »](#)

Product images:



Host: Rabbit
Target Name: DUX4
Sample Tissue: HCT15 Cell Lysate
Antibody Dilution: 1.0 μ g/ml

Host: Rabbit; Target Name: DUX4; Sample Tissue:
HCT15 Whole Cell lysates; Antibody Dilution:
1.0ug/ml