

Product datasheet for **TA330860**

CT47A12 Rabbit Polyclonal Antibody

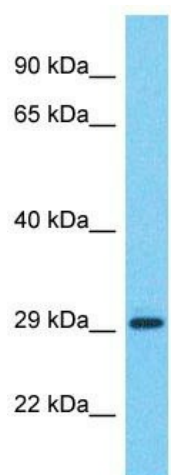
Product data:

Product Type:	Primary Antibodies
Applications:	WB
Recommended Dilution:	WB
Reactivity:	Human
Host:	Rabbit
Isotype:	IgG
Clonality:	Polyclonal
Immunogen:	The immunogen for Anti-CT47A12 antibody is: synthetic peptide directed towards the C-terminal region of Human CT47A12. Synthetic peptide located within the following region: PTAQEATAPEEVTKSQPEKWDEEAQDAAGEEEKEQEKEKDAENKVKNSKG
Formulation:	Liquid. Purified antibody supplied in 1x PBS buffer with 0.09% (w/v) sodium azide and 2% sucrose.
Conjugation:	Unconjugated
Storage:	Store at -20°C as received.
Stability:	Stable for 12 months from date of receipt.
Predicted Protein Size:	31 kDa
Gene Name:	cancer/testis antigen family 47 member A12
Database Link:	NP_001229851 Entrez Gene 100507170 Human Q5IQC4
Background:	This locus represents a member of the cancer/testis gene family 47. This family, also known as CT47, is comprised of 13 nearly identical loci clustered at Xq24.
Synonyms:	CT47; CT47.12
Note:	Human: 100%



[View online »](#)

Product images:



Host: Rabbit
Target Name: CT47A12
Sample Tissue: Hela Cell Lysate
Antibody Dilution: 1.0 μ g/ml

Host: Rabbit; Target Name: CT47A12; Sample
Tissue: Hela Whole Cell lysates; Antibody Dilution:
1.0ug/ml