

Product datasheet for **TA330859**

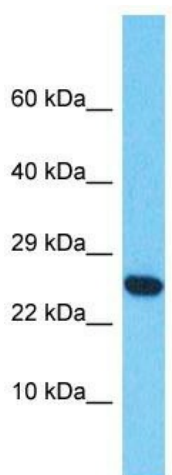
CD300 (CD300LF) Rabbit Polyclonal Antibody

Product data:

Product Type:	Primary Antibodies
Applications:	WB
Recommended Dilution:	WB
Reactivity:	Human
Host:	Rabbit
Isotype:	IgG
Clonality:	Polyclonal
Immunogen:	The immunogen for Anti-CD300LF antibody is: synthetic peptide directed towards the middle region of Human CD300LF. Synthetic peptide located within the following region: IWRDCKILVKTSGSEQEVKRDVSIKDNQKNRTFTVTMEDLMKTDADTYW
Formulation:	Liquid. Purified antibody supplied in 1x PBS buffer with 0.09% (w/v) sodium azide and 2% sucrose. <i>Note that this product is shipped as lyophilized powder to China customers.</i>
Conjugation:	Unconjugated
Storage:	Store at -20°C as received.
Stability:	Stable for 12 months from date of receipt.
Predicted Protein Size:	26 kDa
Gene Name:	CD300 molecule like family member f
Database Link:	NP_620587 Entrez Gene 146722 Human Q8TDQ1
Background:	CD300LF is an inhibitory receptor of the Ig superfamily expressed on myeloid cells. It mediates negative regulatory signals by recruiting SHP1 or SHIP.
Synonyms:	CD300f; CLM-1; CLM1; IgSF13; IREM-1; IREM1; LMIR3; NKIR
Note:	Human: 100%
Protein Families:	Druggable Genome, Transmembrane



[View online »](#)

Product images:


Host: Rabbit

Target Name: CD300LF

Sample Tissue: HepG2 Cell Lysate

Antibody Dilution: 1.0µg/ml

Host: Rabbit; Target Name: CD300LF; Sample
Tissue: HepG2 Whole Cell lysates; Antibody
Dilution: 1.0ug/ml