

Product datasheet for **TA330857**

CCDC85C Rabbit Polyclonal Antibody

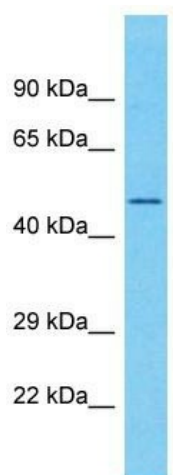
Product data:

Product Type:	Primary Antibodies
Applications:	WB
Recommended Dilution:	WB
Reactivity:	Human
Host:	Rabbit
Isotype:	IgG
Clonality:	Polyclonal
Immunogen:	The immunogen for Anti-CCDC85C antibody is: synthetic peptide directed towards the C-terminal region of Human CCDC85C. Synthetic peptide located within the following region: HAMKVLVHENVLDRQLQDSCEEDLSEKEKAIVREMCNVVWRKLGDAASSK
Formulation:	Liquid. Purified antibody supplied in 1x PBS buffer with 0.09% (w/v) sodium azide and 2% sucrose. <i>Note that this product is shipped as lyophilized powder to China customers.</i>
Conjugation:	Unconjugated
Storage:	Store at -20°C as received.
Stability:	Stable for 12 months from date of receipt.
Predicted Protein Size:	46 kDa
Gene Name:	coiled-coil domain containing 85C
Database Link:	NP_001138467 Entrez Gene 317762 Human A6NKD9
Background:	CCDC85C may play an important role in cortical development, especially in the maintenance of radial glia.
Synonyms:	FLJ22558; MGC117455
Note:	Dog: 100%; Pig: 100%; Horse: 100%; Human: 100%; Mouse: 100%; Zebrafish: 100%; Guinea pig: 100%; Bovine: 93%



[View online »](#)

Product images:



Host: Rabbit
Target Name: CCDC85C
Sample Tissue: Fetal Lung Lysate
Antibody Dilution: 1.0µg/ml

Host: Rabbit; Target Name: CCDC85C; Sample Tissue: Fetal Lung lysates; Antibody Dilution: 1.0ug/ml