

## Product datasheet for **TA330856**

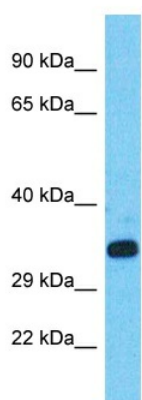
### CCDC61 Rabbit Polyclonal Antibody

#### Product data:

Product Type:	Primary Antibodies
Recommended Dilution:	WB
Reactivity:	Human
Host:	Rabbit
Isotype:	IgG
Clonality:	Polyclonal
Immunogen:	The immunogen for Anti-CCDC61 antibody is: synthetic peptide directed towards the C-terminal region of Human CCDC61. Synthetic peptide located within the following region: RGKPPSPTPWSGSNMKSPVERS HHQKSLANSGGWVPIKEYSSEHQ AADM
Formulation:	Liquid. Purified antibody supplied in 1x PBS buffer with 0.09% (w/v) sodium azide and 2% sucrose.
Conjugation:	Unconjugated
Storage:	Store at -20°C as received.
Stability:	Stable for 12 months from date of receipt.
Predicted Protein Size:	36 kDa
Gene Name:	coiled-coil domain containing 61
Database Link:	<a href="#">NP_001073871</a> <a href="#">Entrez Gene 729440 Human</a> <a href="#">Q9Y6R9</a>
Background:	The function of this protein remains unknown.
Synonyms:	coiled-coil domain containing 61
Note:	Human: 100%



[View online »](#)

**Product images:**

Host: Rabbit  
Target Name: CCDC61  
Sample Tissue: HepG2 Cell Lysate  
Antibody Dilution: 1.0 $\mu$ g/ml

Host: Rabbit  
Target Name: CCDC61  
Sample Type: HepG2 Whole Cell lysates  
Antibody Dilution: 1.0ug/ml