

Product datasheet for **TA330854**

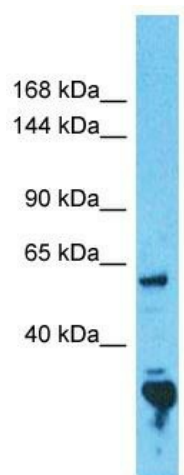
CCDC30 Rabbit Polyclonal Antibody

Product data:

Product Type:	Primary Antibodies
Applications:	WB
Recommended Dilution:	WB
Reactivity:	Human
Host:	Rabbit
Isotype:	IgG
Clonality:	Polyclonal
Immunogen:	The immunogen for Anti-CCDC30 antibody is: synthetic peptide directed towards the N-terminal region of Human CCDC30. Synthetic peptide located within the following region: ALKVESEVLKLSQEFAQLNHFTLGGKTAPSNLITSENTCKDPESNEPILE
Formulation:	Liquid. Purified antibody supplied in 1x PBS buffer with 0.09% (w/v) sodium azide and 2% sucrose.
Conjugation:	Unconjugated
Storage:	Store at -20°C as received.
Stability:	Stable for 12 months from date of receipt.
Predicted Protein Size:	34 kDa
Gene Name:	coiled-coil domain containing 30
Database Link:	NP_001074319 Entrez Gene 728621 Human Q5VVM6
Background:	The function of this protein remains unknown.
Synonyms:	PFD6L; PFDN6L
Note:	Human: 100%; Rabbit: 100%



[View online »](#)

Product images:

Host: Rabbit
Target Name: CCDC30
Sample Tissue: 293T Cell Lysate
Antibody Dilution: 1.0 μ g/ml

Host: Rabbit; Target Name: CCDC30; Sample
Tissue: 293T Whole Cell lysates; Antibody
Dilution: 1.0ug/ml