

## Product datasheet for **TA330853**

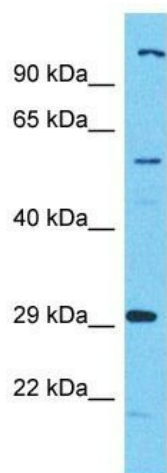
### C17orf99 Rabbit Polyclonal Antibody

#### Product data:

Product Type:	Primary Antibodies
Applications:	WB
Recommended Dilution:	WB
Reactivity:	Human
Host:	Rabbit
Isotype:	IgG
Clonality:	Polyclonal
Immunogen:	The immunogen for Anti-C17orf99 antibody is: synthetic peptide directed towards the N-terminal region of Human C17orf99. Synthetic peptide located within the following region: TYSLCGTKNIKVAKKVVKTHEPASFNLNVTLKSSPDLLTYFCWASSTSGA
Formulation:	Liquid. Purified antibody supplied in 1x PBS buffer with 0.09% (w/v) sodium azide and 2% sucrose. <i>Note that this product is shipped as lyophilized powder to China customers.</i>
Conjugation:	Unconjugated
Storage:	Store at -20°C as received.
Stability:	Stable for 12 months from date of receipt.
Predicted Protein Size:	29 kDa
Gene Name:	chromosome 17 open reading frame 99
Database Link:	<a href="#">NP_001156547</a> <a href="#">Entrez Gene 100141515 Human</a> <a href="#">Q6UX52</a>
Background:	The function of this protein remains unknown.
Synonyms:	UNQ464
Note:	Human: 100%; Dog: 85%; Rat: 77%



[View online »](#)

**Product images:**

Host: Rabbit  
Target Name: C17orf99  
Sample Tissue: Hela Cell Lysate  
Antibody Dilution: 1.0 $\mu$ g/ml

Host: Rabbit; Target Name: C17orf99; Sample  
Tissue: Hela Whole Cell lysates; Antibody Dilution:  
1.0ug/ml