

Product datasheet for **TA330851**

SOHLH2 Rabbit Polyclonal Antibody

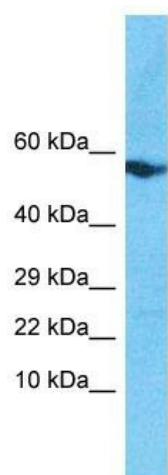
Product data:

Product Type:	Primary Antibodies
Applications:	WB
Recommended Dilution:	WB
Reactivity:	Human
Host:	Rabbit
Isotype:	IgG
Clonality:	Polyclonal
Immunogen:	The immunogen for Anti-SOHLH2 antibody is: synthetic peptide directed towards the N-terminal region of Human SOHLH2. Synthetic peptide located within the following region: ALKLEQESKAYQKINNERRTYLAEMSQGSLHQVSKRQQVDQLPRMQENL
Formulation:	Liquid. Purified antibody supplied in 1x PBS buffer with 0.09% (w/v) sodium azide and 2% sucrose.
Conjugation:	Unconjugated
Storage:	Store at -20°C as received.
Stability:	Stable for 12 months from date of receipt.
Predicted Protein Size:	55 kDa
Gene Name:	spermatogenesis and oogenesis specific basic helix-loop-helix 2
Database Link:	NP_060296 Entrez Gene 54937 Human Q9NX45
Background:	SOHLH2 is the probable transcription factor, which may be involved in spermatogenesis and oogenesis.
Synonyms:	bHLHe81; SOSF2; SPATA28; TEB1
Note:	Human: 100%; Pig: 91%; Guinea pig: 91%; Dog: 79%; Horse: 79%; Mouse: 75%
Protein Families:	Transcription Factors



[View online »](#)

Product images:



Host: Rabbit

Target Name: SOHLH2

Sample Tissue: MDA-MB-435s Cell Lysate

Antibody Dilution: 1.0 μ g/ml

Host: Rabbit; Target Name: SOHLH2; Sample
Tissue: MDA-MB-435s Whole Cell lysates;
Antibody Dilution: 1.0ug/ml