

Product datasheet for **TA330850**

C11orf91 Rabbit Polyclonal Antibody

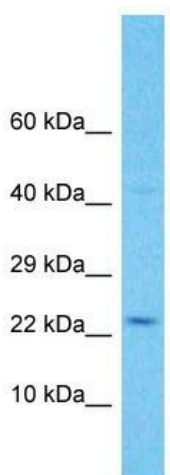
Product data:

Product Type:	Primary Antibodies
Applications:	WB
Recommended Dilution:	WB
Reactivity:	Human
Host:	Rabbit
Isotype:	IgG
Clonality:	Polyclonal
Immunogen:	The immunogen for Anti-C11orf91 antibody is: synthetic peptide directed towards the C-terminal region of Human C11orf91. Synthetic peptide located within the following region: LCELEIRIKELELLTITGDFDSQSYTLKALKDEKLQGLKTKQPGKKS
Formulation:	Liquid. Purified antibody supplied in 1x PBS buffer with 0.09% (w/v) sodium azide and 2% sucrose. <i>Note that this product is shipped as lyophilized powder to China customers.</i>
Conjugation:	Unconjugated
Storage:	Store at -20°C as received.
Stability:	Stable for 12 months from date of receipt.
Predicted Protein Size:	21 kDa
Gene Name:	chromosome 11 open reading frame 91
Database Link:	NP_001160164 Entrez Gene 100131378 Human Q3C1V1
Background:	The function of this protein remains unknown.
Synonyms:	C11orf91
Note:	Human: 100%; Rabbit: 100%; Pig: 93%; Rat: 93%; Horse: 93%; Mouse: 93%; Bovine: 93%; Guinea pig: 92%; Dog: 86%



[View online »](#)

Product images:



Host: Rabbit
Target Name: C11orf91
Sample Tissue: Jurkat Cell Lysate
Antibody Dilution: 1.0 μ g/ml

Host: Rabbit; Target Name: C11orf91; Sample
Tissue: Jurkat Whole Cell lysates; Antibody
Dilution: 1.0ug/ml