

Product datasheet for **TA330849**

C10orf131 Rabbit Polyclonal Antibody

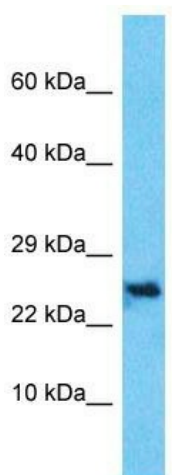
Product data:

Product Type:	Primary Antibodies
Applications:	WB
Recommended Dilution:	WB
Reactivity:	Human
Host:	Rabbit
Isotype:	IgG
Clonality:	Polyclonal
Immunogen:	The immunogen for Anti-C10orf131 antibody is: synthetic peptide directed towards the middle region of Human C10orf131. Synthetic peptide located within the following region: EEEEFMKEFILTDILKVKAAADYEDDQEIKKQKANIFVSSSPVNVQRKL
Formulation:	Liquid. Purified antibody supplied in 1x PBS buffer with 0.09% (w/v) sodium azide and 2% sucrose.
Conjugation:	Unconjugated
Storage:	Store at -20°C as received.
Stability:	Stable for 12 months from date of receipt.
Predicted Protein Size:	28 kDa
Gene Name:	chromosome 10 open reading frame 131
Database Link:	NP_001123918 Entrez Gene 387707 Human Entrez Gene 100127889 Human
Background:	The function of this protein remains unknown.
Synonyms:	bA690P14.3
Note:	Human: 100%; Pig: 92%; Dog: 85%; Rat: 85%; Bovine: 85%; Rabbit: 85%; Yeast: 79%



[View online »](#)

Product images:



Host: Rabbit
Target Name: C10orf131
Sample Tissue: HepG2 Cell Lysate
Antibody Dilution: 1.0 μ g/ml

Host: Rabbit; Target Name: C10orf131; Sample
Tissue: HepG2 Whole Cell lysates; Antibody
Dilution: 1.0ug/ml