

Product datasheet for **TA330848**

C9orf174 (CCDC180) Rabbit Polyclonal Antibody

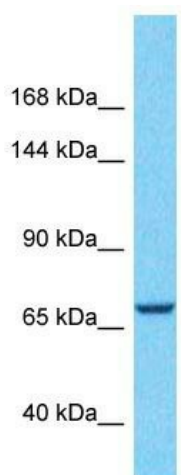
Product data:

Product Type:	Primary Antibodies
Applications:	WB
Recommended Dilution:	WB
Reactivity:	Human
Host:	Rabbit
Isotype:	IgG
Clonality:	Polyclonal
Immunogen:	The immunogen for Anti-CCDC180 antibody is: synthetic peptide directed towards the middle region of Human CCDC180. Synthetic peptide located within the following region: QKWMHSLPNDWIMENPVLHREKERAKREKARESENTIAAREVRGLMDTIV
Formulation:	Liquid. Purified antibody supplied in 1x PBS buffer with 0.09% (w/v) sodium azide and 2% sucrose.
Conjugation:	Unconjugated
Storage:	Store at -20°C as received.
Stability:	Stable for 12 months from date of receipt.
Predicted Protein Size:	75 kDa
Gene Name:	coiled-coil domain containing 180
Database Link:	NP_065944 Entrez Gene 100499483 Human Q9P1Z9
Background:	The function of this protein remains unknown.
Synonyms:	BDAG1; C9orf174; KIAA1529
Note:	Human: 100%; Yeast: 100%; Pig: 79%; Rat: 79%



[View online »](#)

Product images:



Host: Rabbit
Target Name: CCDC180
Sample Tissue: THP-1 Cell Lysate
Antibody Dilution: 1.0µg/ml

Host: Rabbit; Target Name: CCDC180; Sample
Tissue: THP-1 Whole Cell lysates; Antibody
Dilution: 1.0ug/ml