

Product datasheet for **TA330847**

SPATA48 Rabbit Polyclonal Antibody

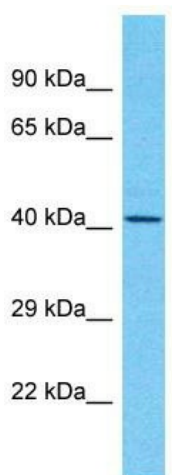
Product data:

Product Type:	Primary Antibodies
Applications:	WB
Recommended Dilution:	WB
Reactivity:	Human
Host:	Rabbit
Isotype:	IgG
Clonality:	Polyclonal
Immunogen:	The immunogen for Anti-C7orf72 antibody is: synthetic peptide directed towards the N-terminal region of Human C7orf72. Synthetic peptide located within the following region: PHYCDLLRKMNMPFVKGLENRHNYGRFEKKCNPAFLKFHPYPPSVLPDYH
Formulation:	Liquid. Purified antibody supplied in 1x PBS buffer with 0.09% (w/v) sodium azide and 2% sucrose. <i>Note that this product is shipped as lyophilized powder to China customers.</i>
Conjugation:	Unconjugated
Storage:	Store at -20°C as received.
Stability:	Stable for 12 months from date of receipt.
Predicted Protein Size:	48 kDa
Gene Name:	chromosome 7 open reading frame 72
Database Link:	NP_001155306 Entrez Gene 100130988 Human
Background:	The function of this protein remains unknown.
Synonyms:	C7orf72
Note:	Human: 100%; Dog: 93%; Pig: 93%; Mouse: 92%; Horse: 86%; Bovine: 86%; Guinea pig: 86%; Rat: 85%



[View online »](#)

Product images:



Host: Rabbit
Target Name: C7orf72
Sample Tissue: ACHN Cell Lysate
Antibody Dilution: 1.0 μ g/ml

Host: Rabbit; Target Name: C7orf72; Sample
Tissue: ACHN Whole Cell lysates; Antibody
Dilution: 1.0ug/ml