

Product datasheet for **TA330846**

C6orf58 Rabbit Polyclonal Antibody

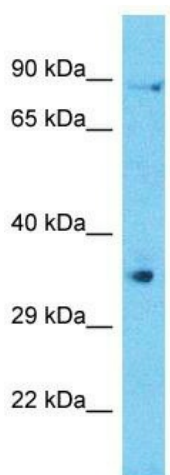
Product data:

Product Type:	Primary Antibodies
Applications:	WB
Recommended Dilution:	WB
Reactivity:	Human
Host:	Rabbit
Isotype:	IgG
Clonality:	Polyclonal
Immunogen:	The immunogen for Anti-C6orf58 antibody is: synthetic peptide directed towards the N-terminal region of Human C6orf58. Synthetic peptide located within the following region: ILWGLPLQYGWQYRTGRLADPTRRTNCGYESGDHMCISVDSWWADLNYFL
Formulation:	Liquid. Purified antibody supplied in 1x PBS buffer with 0.09% (w/v) sodium azide and 2% sucrose. <i>Note that this product is shipped as lyophilized powder to China customers.</i>
Conjugation:	Unconjugated
Storage:	Store at -20°C as received.
Stability:	Stable for 12 months from date of receipt.
Predicted Protein Size:	36 kDa
Gene Name:	chromosome 6 open reading frame 58
Database Link:	NP_001010905 Entrez Gene 352999 Human Q6P5S2
Background:	The function of this protein remains unknown.
Synonyms:	LEG1
Note:	Human: 100%; Pig: 86%; Bovine: 85%; Guinea pig: 85%; Horse: 79%; Rabbit: 79%; Dog: 77%
Protein Families:	Secreted Protein



[View online »](#)

Product images:



Host: Rabbit
Target Name: C6orf58
Sample Tissue: ACHN Cell Lysate
Antibody Dilution: 1.0 μ g/ml

Host: Rabbit; Target Name: C6orf58; Sample
Tissue: ACHN Whole Cell lysates; Antibody
Dilution: 1.0 μ g/ml