

## Product datasheet for **TA330843**

### SPDYE3 Rabbit Polyclonal Antibody

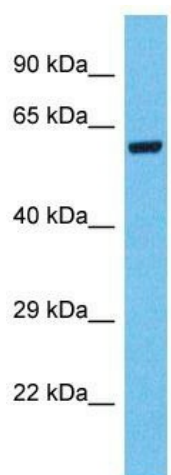
#### Product data:

Product Type:	Primary Antibodies
Applications:	WB
Recommended Dilution:	WB
Reactivity:	Human
Host:	Rabbit
Isotype:	IgG
Clonality:	Polyclonal
Immunogen:	The immunogen for Anti-SPDYE3 antibody is: synthetic peptide directed towards the N-terminal region of Human SPDYE3. Synthetic peptide located within the following region: MTSHQPQPQEEQSPQRSTSGYPLQEVDDEVSGPSAPGVDPSPRRSLGC
Formulation:	Liquid. Purified antibody supplied in 1x PBS buffer with 0.09% (w/v) sodium azide and 2% sucrose.
Conjugation:	Unconjugated
Storage:	Store at -20°C as received.
Stability:	Stable for 12 months from date of receipt.
Predicted Protein Size:	60 kDa
Gene Name:	speedy/RINGO cell cycle regulator family member E3
Database Link:	<a href="#">NP_001004351</a> <a href="#">Entrez Gene 441272 Human</a> <a href="#">A6N KU9</a>
Background:	The function of this protein remains unknown.
Synonyms:	MGC57359; MGC119294
Note:	Human: 100%



[View online »](#)

## Product images:



Host: Rabbit  
Target Name: SPDYE3  
Sample Tissue: Hela Cell Lysate  
Antibody Dilution: 1.0µg/ml

Host: Rabbit; Target Name: SPDYE3; Sample  
Tissue: Hela Whole Cell lysates; Antibody Dilution:  
1.0ug/ml