

Product datasheet for **TA330842**

SLC35E2B Rabbit Polyclonal Antibody

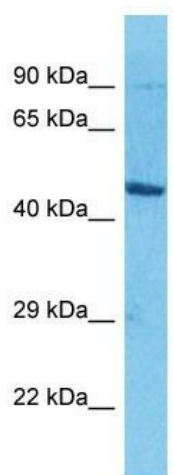
Product data:

Product Type:	Primary Antibodies
Applications:	WB
Recommended Dilution:	WB
Reactivity:	Human
Host:	Rabbit
Isotype:	IgG
Clonality:	Polyclonal
Immunogen:	The immunogen for Anti-SLC35E2B antibody is: synthetic peptide directed towards the N-terminal region of Human SLC35E2B. Synthetic peptide located within the following region: SVKTPALEELVPGSEEKPKGRSPLSWGSLFGHRSEKIVFAKSDGGTDENV
Formulation:	Liquid. Purified antibody supplied in 1x PBS buffer with 0.09% (w/v) sodium azide and 2% sucrose. <i>Note that this product is shipped as lyophilized powder to China customers.</i>
Conjugation:	Unconjugated
Storage:	Store at -20°C as received.
Stability:	Stable for 12 months from date of receipt.
Predicted Protein Size:	44 kDa
Gene Name:	solute carrier family 35 member E2B
Database Link:	NP_001104251 Entrez Gene 728661 Human P0CK96
Background:	SLC35E2B is a putative transporter.
Synonyms:	SLC35E2
Note:	Human: 100%; Dog: 79%
Protein Families:	Transmembrane



[View online »](#)

Product images:



Host: Rabbit
Target Name: SLC35E2B
Sample Tissue: Jurkat Cell Lysate
Antibody Dilution: 1.0µg/ml

Host: Rabbit; Target Name: SLC35E2B; Sample
Tissue: Jurkat Whole Cell lysates; Antibody
Dilution: 1.0ug/ml