

Product datasheet for **TA330841**

SHISA9 Rabbit Polyclonal Antibody

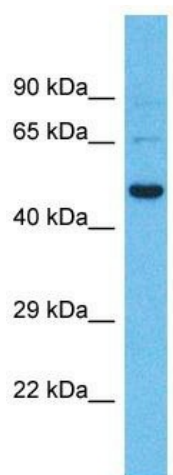
Product data:

Product Type:	Primary Antibodies
Applications:	WB
Recommended Dilution:	WB
Reactivity:	Human
Host:	Rabbit
Isotype:	IgG
Clonality:	Polyclonal
Immunogen:	The immunogen for Anti-SHISA9 antibody is: synthetic peptide directed towards the middle region of Human SHISA9. Synthetic peptide located within the following region: NYDTPLWLNTGKPPARKDDPLHDPTKDKTNLIVYIICGVVAVMVLVGIFT
Formulation:	Liquid. Purified antibody supplied in 1x PBS buffer with 0.09% (w/v) sodium azide and 2% sucrose.
Conjugation:	Unconjugated
Storage:	Store at -20°C as received.
Stability:	Stable for 12 months from date of receipt.
Predicted Protein Size:	51 kDa
Gene Name:	shisa family member 9
Database Link:	NP_001138676 Entrez Gene 729993 Human B4DS77
Background:	The function of this protein remains unknown.
Synonyms:	CKAMP44
Note:	Dog: 100%; Pig: 100%; Rat: 100%; Horse: 100%; Human: 100%; Mouse: 100%; Bovine: 100%; Rabbit: 100%; Guinea pig: 100%



[View online »](#)

Product images:



Host: Rabbit
Target Name: SHISA9
Sample Tissue: Fetal Liver Lysate
Antibody Dilution: 1.0µg/ml

Host: Rabbit; Target Name: SHISA9; Sample
Tissue: Fetal Liver lysates; Antibody Dilution:
1.0ug/ml