

Product datasheet for **TA330840**

SHISA7 Rabbit Polyclonal Antibody

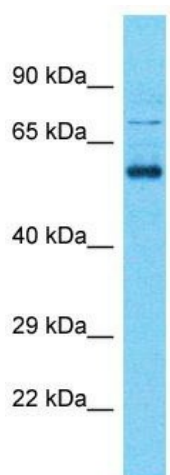
Product data:

Product Type:	Primary Antibodies
Applications:	WB
Recommended Dilution:	WB
Reactivity:	Human
Host:	Rabbit
Isotype:	IgG
Clonality:	Polyclonal
Immunogen:	The immunogen for Anti-SHISA7 antibody is: synthetic peptide directed towards the middle region of Human SHISA7. Synthetic peptide located within the following region: INVPRALVDILRHQAGPGTRPDRARSSSLTPGIGGPDSMPRPRTPKNLYNT
Formulation:	Liquid. Purified antibody supplied in 1x PBS buffer with 0.09% (w/v) sodium azide and 2% sucrose.
Conjugation:	Unconjugated
Storage:	Store at -20°C as received.
Stability:	Stable for 12 months from date of receipt.
Predicted Protein Size:	59 kDa
Gene Name:	shisa family member 7
Database Link:	NP_001138648 Entrez Gene 729956 Human A6NL88
Background:	The function of this protein remains unknown.
Synonyms:	DKFZp547H0214; FLJ34341; FLJ37640; FLJ45290; MGC120935; MGC138402
Note:	Dog: 100%; Pig: 100%; Horse: 100%; Human: 100%; Guinea pig: 100%; Rat: 93%; Mouse: 93%; Bovine: 93%



[View online »](#)

Product images:



Host: Rabbit

Target Name: SHISA7

Sample Tissue: OVCAR-3 Cell Lysate

Antibody Dilution: 1.0µg/ml

Host: Rabbit; Target Name: SHISA7; Sample Tissue: OVCAR-3 Whole Cell lysates; Antibody Dilution: 1.0ug/ml