

## Product datasheet for **TA330836**

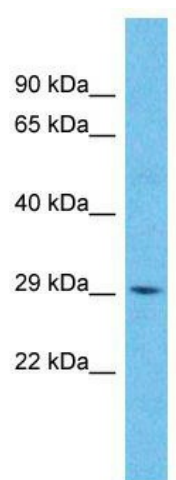
### ZDHHC22 Rabbit Polyclonal Antibody

#### Product data:

Product Type:	Primary Antibodies
Applications:	WB
Recommended Dilution:	WB
Reactivity:	Human
Host:	Rabbit
Isotype:	IgG
Clonality:	Polyclonal
Immunogen:	The immunogen for Anti-ZDHHC22 antibody is: synthetic peptide directed towards the C-terminal region of Human ZDHHC22. Synthetic peptide located within the following region: QTRHQVRKGVAVRARPWKLNQEVFGKRWLLGLLVPMFNVGSESSKQQDK
Formulation:	Liquid. Purified antibody supplied in 1x PBS buffer with 0.09% (w/v) sodium azide and 2% sucrose. <i>Note that this product is shipped as lyophilized powder to China customers.</i>
Conjugation:	Unconjugated
Storage:	Store at -20°C as received.
Stability:	Stable for 12 months from date of receipt.
Predicted Protein Size:	28 kDa
Gene Name:	zinc finger DHHC-type containing 22
Database Link:	<a href="#">NP_777636</a> <a href="#">Entrez Gene 283576 Human</a> <a href="#">Q8N966</a>
Background:	The function of this protein remains unknown.
Synonyms:	C14orf59
Note:	Human: 100%; Pig: 93%; Rat: 93%; Mouse: 93%; Rabbit: 93%; Dog: 86%; Horse: 86%; Bovine: 86%; Guinea pig: 86%



[View online »](#)

**Product images:**

Host: Rabbit; Target Name: ZDHHC22; Sample  
Tissue: 293T Whole Cell lysates; Antibody  
Dilution: 1.0ug/ml