

Product datasheet for **TA330834**

ZDHHC20 Rabbit Polyclonal Antibody

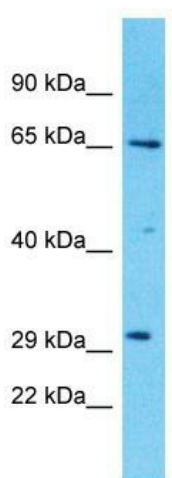
Product data:

Product Type:	Primary Antibodies
Applications:	WB
Recommended Dilution:	WB
Reactivity:	Human
Host:	Rabbit
Isotype:	IgG
Clonality:	Polyclonal
Immunogen:	The immunogen for Anti-ZDHHC20 antibody is: synthetic peptide directed towards the N-terminal region of Human ZDHHC20. Synthetic peptide located within the following region: IFTSPASPSKEFYLSNSEKERYEKEFSQERQQEILRRAARALPIYTTSAS
Formulation:	Liquid. Purified antibody supplied in 1x PBS buffer with 0.09% (w/v) sodium azide and 2% sucrose. <i>Note that this product is shipped as lyophilized powder to China customers.</i>
Conjugation:	Unconjugated
Storage:	Store at -20°C as received.
Stability:	Stable for 12 months from date of receipt.
Predicted Protein Size:	32 kDa
Gene Name:	zinc finger DHHC-type containing 20
Database Link:	NP_694983 Entrez Gene 253832 Human Q5W0Z9
Background:	The function of this protein remains unknown.
Synonyms:	4933421L13Rik; DHHC-20
Note:	Dog: 100%; Pig: 100%; Rat: 100%; Human: 100%; Mouse: 100%; Bovine: 100%; Rabbit: 100%; Yeast: 92%; Horse: 86%
Protein Families:	Transmembrane



[View online »](#)

Product images:



Host: Rabbit

Target Name: ZDHHC20

Sample Tissue: THP-1 Cell Lysate

Antibody Dilution: 1.0 μ g/ml

Host: Rabbit; Target Name: ZDHHC20; Sample Tissue: THP-1 Whole cell lysates; Antibody Dilution: 1.0 μ g/ml