

Product datasheet for **TA330833**

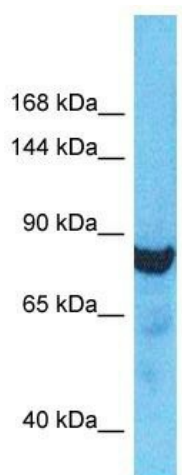
ZBBX Rabbit Polyclonal Antibody

Product data:

Product Type:	Primary Antibodies
Applications:	WB
Recommended Dilution:	WB
Reactivity:	Human
Host:	Rabbit
Isotype:	IgG
Clonality:	Polyclonal
Immunogen:	The immunogen for Anti-ZBBX antibody is: synthetic peptide directed towards the N-terminal region of Human ZBBX. Synthetic peptide located within the following region: QNKGNVVKFSAGKVKLKLLKEQIQEPVKPTVNYKMANSSECEKPKINGKV
Formulation:	Liquid. Purified antibody supplied in 1x PBS buffer with 0.09% (w/v) sodium azide and 2% sucrose.
Conjugation:	Unconjugated
Storage:	Store at -20°C as received.
Stability:	Stable for 12 months from date of receipt.
Predicted Protein Size:	84 kDa
Gene Name:	zinc finger B-box domain containing
Database Link:	NP_001186131 Entrez Gene 79740 Human A8MT70
Background:	The function of this protein remains unknown.
Synonyms:	FLJ23049
Note:	Human: 100%; Pig: 92%; Horse: 85%; Rabbit: 85%; Dog: 83%



[View online »](#)

Product images:


Host: Rabbit
 Target Name: ZBBX
 Sample Tissue: HeLa Cell Lysate
 Antibody Dilution: 1.0µg/ml

Host: Rabbit; Target Name: ZBBX; Sample Tissue:
 HeLa Whole Cell lysates; Antibody Dilution:
 1.0ug/ml