

## Product datasheet for **TA330832**

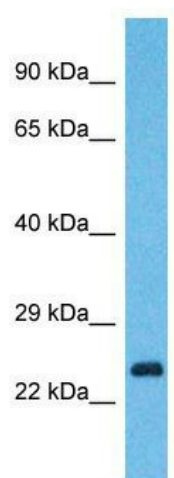
### YIPF7 Rabbit Polyclonal Antibody

#### Product data:

Product Type:	Primary Antibodies
Applications:	WB
Recommended Dilution:	WB
Reactivity:	Human
Host:	Rabbit
Isotype:	IgG
Clonality:	Polyclonal
Immunogen:	The immunogen for Anti-YIPF7 antibody is: synthetic peptide directed towards the N-terminal region of Human YIPF7. Synthetic peptide located within the following region: FTIDNQEQSGNDSNAYGNLYGSRKQQAGEQPQPASFPSEMLMSSGYAGQ
Formulation:	Liquid. Purified antibody supplied in 1x PBS buffer with 0.09% (w/v) sodium azide and 2% sucrose. <i>Note that this product is shipped as lyophilized powder to China customers.</i>
Conjugation:	Unconjugated
Storage:	Store at -20°C as received.
Stability:	Stable for 12 months from date of receipt.
Predicted Protein Size:	22 kDa
Gene Name:	Yip1 domain family member 7
Database Link:	<a href="#">NP_872398</a> <a href="#">Entrez Gene 285525 Human</a> <a href="#">Q8N8F6</a>
Background:	The function of this protein remains unknown.
Synonyms:	FinGER9
Note:	Human: 100%; Bovine: 93%; Pig: 77%



[View online »](#)

**Product images:**

Host: Rabbit; Target Name: YIPF7; Sample Tissue: HepG2 Whole Cell lysates; Antibody Dilution: 1.0ug/ml