

Product datasheet for **TA330829**

WWC2 Rabbit Polyclonal Antibody

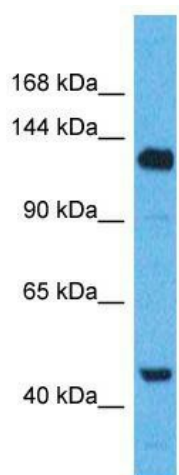
Product data:

Product Type:	Primary Antibodies
Applications:	WB
Recommended Dilution:	WB
Reactivity:	Human
Host:	Rabbit
Isotype:	IgG
Clonality:	Polyclonal
Immunogen:	The immunogen for Anti-WWC2 antibody is: synthetic peptide directed towards the C-terminal region of Human WWC2. Synthetic peptide located within the following region: RLLKQAEKQAEQSKEEQKQGLNNAEKLNRQVSKDVCRLREQSQKVPQVQS
Formulation:	Liquid. Purified antibody supplied in 1x PBS buffer with 0.09% (w/v) sodium azide and 2% sucrose. <i>Note that this product is shipped as lyophilized powder to China customers.</i>
Conjugation:	Unconjugated
Storage:	Store at -20°C as received.
Stability:	Stable for 12 months from date of receipt.
Predicted Protein Size:	133 kDa
Gene Name:	WW and C2 domain containing 2
Database Link:	NP_079225 Entrez Gene 80014 Human Q6AWC2
Background:	The function of this protein remains unknown.
Synonyms:	BOMB
Note:	Dog: 100%; Pig: 100%; Human: 100%; Horse: 93%; Rat: 92%; Mouse: 92%; Bovine: 92%; Guinea pig: 92%; Yeast: 83%



[View online »](#)

Product images:



Host: Rabbit; Target Name: WWC2; Sample
Tissue: MCF7 Whole Cell lysates; Antibody
Dilution: 1.0ug/ml