

## Product datasheet for **TA330828**

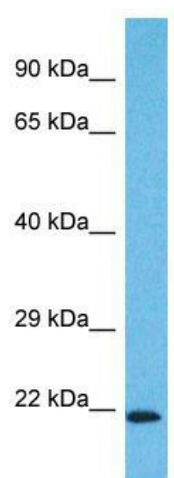
### NTAQ1 Rabbit Polyclonal Antibody

#### Product data:

Product Type:	Primary Antibodies
Applications:	WB
Recommended Dilution:	WB
Reactivity:	Human
Host:	Rabbit
Isotype:	IgG
Clonality:	Polyclonal
Immunogen:	The immunogen for Anti-WDYHV1 antibody is: synthetic peptide directed towards the N-terminal region of Human WDYHV1. Synthetic peptide located within the following region: ENIWKLCEYIKNHDQYPLEECYAVFISNERKMIPIWKQARPGDGPVIWD
Formulation:	Liquid. Purified antibody supplied in 1x PBS buffer with 0.09% (w/v) sodium azide and 2% sucrose. <i>Note that this product is shipped as lyophilized powder to China customers.</i>
Conjugation:	Unconjugated
Storage:	Store at -20°C as received.
Stability:	Stable for 12 months from date of receipt.
Predicted Protein Size:	21 kDa
Gene Name:	WDYHV motif containing 1
Database Link:	<a href="#">NP_060494</a> <a href="#">Entrez Gene 55093 Human Q96HA8</a>
Background:	The function of this protein remains unknown.
Synonyms:	C8orf32
Note:	Dog: 100%; Pig: 100%; Horse: 100%; Human: 100%; Bovine: 100%; Rat: 93%; Rabbit: 93%; Mouse: 86%; Guinea pig: 86%
Protein Families:	Stem cell - Pluripotency



[View online »](#)

**Product images:**

Host: Rabbit; Target Name: WDYHV1; Sample  
Tissue: HepG2 Whole Cell lysates; Antibody  
Dilution: 1.0ug/ml