

## Product datasheet for **TA330827**

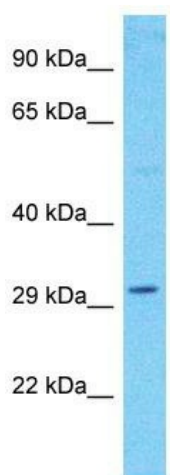
### WDR86 Rabbit Polyclonal Antibody

#### Product data:

Product Type:	Primary Antibodies
Applications:	WB
Recommended Dilution:	WB
Reactivity:	Human
Host:	Rabbit
Isotype:	IgG
Clonality:	Polyclonal
Immunogen:	The immunogen for Anti-LOC349136 antibody is: synthetic peptide directed towards the C-terminal region of Human LOC349136. Synthetic peptide located within the following region: SADRTVKCWLADTGECVRTFTAHRRNVSALKYHAGTLFTGSGDACARAFD
Formulation:	Liquid. Purified antibody supplied in 1x PBS buffer with 0.09% (w/v) sodium azide and 2% sucrose. <i>Note that this product is shipped as lyophilized powder to China customers.</i>
Conjugation:	Unconjugated
Storage:	Store at -20°C as received.
Stability:	Stable for 12 months from date of receipt.
Predicted Protein Size:	36 kDa
Gene Name:	WD repeat domain 86
Database Link:	<a href="#">NP_938026</a> <a href="#">Entrez Gene 349136 Human</a> <a href="#">Q86TI4</a>
Background:	The function of this protein remains unknown.
Synonyms:	FLJ51355; MGC129839
Note:	Pig: 100%; Rat: 100%; Human: 100%; Mouse: 100%; Rabbit: 100%; Guinea pig: 100%; Dog: 93%; Bovine: 93%



[View online »](#)

**Product images:**

Host: Rabbit  
Target Name: LOC349136  
Sample Tissue: 721\_B Cell Lysate  
Antibody Dilution: 1.0 $\mu$ g/ml

Host: Rabbit; Target Name: LOC349136; Sample  
Tissue: 721\_B Whole Cell lysates; Antibody  
Dilution: 1.0ug/ml