

Product datasheet for **TA330825**

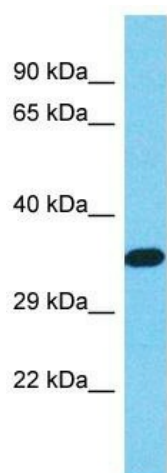
WDR61 Rabbit Polyclonal Antibody

Product data:

Product Type:	Primary Antibodies
Applications:	WB
Recommended Dilution:	WB
Reactivity:	Human
Host:	Rabbit
Isotype:	IgG
Clonality:	Polyclonal
Immunogen:	The immunogen for Anti-WDR61 antibody is: synthetic peptide directed towards the N-terminal region of Human WDR61. Synthetic peptide located within the following region: AIWSVAWGTVNKKENSETVVTGSLDDLKVKWWRDERLDLQWSLEGHQLGV
Formulation:	Liquid. Purified antibody supplied in 1x PBS buffer with 0.09% (w/v) sodium azide and 2% sucrose. <i>Note that this product is shipped as lyophilized powder to China customers.</i>
Conjugation:	Unconjugated
Storage:	Store at -20°C as received.
Stability:	Stable for 12 months from date of receipt.
Predicted Protein Size:	33 kDa
Gene Name:	WD repeat domain 61
Database Link:	NP_079510 Entrez Gene 80349 Human Q9GZS3
Background:	WDR61 is a subunit of the human PAF and SKI complexes, which function in transcriptional regulation and are involved in events downstream of RNA synthesis, such as RNA surveillance.
Synonyms:	REC14; SKI8
Note:	Dog: 100%; Pig: 100%; Rat: 100%; Horse: 100%; Human: 100%; Guinea pig: 100%; Bovine: 93%; Rabbit: 93%; Mouse: 86%
Protein Pathways:	RNA degradation



[View online »](#)

Product images:

Host: Rabbit
Target Name: WDR61
Sample Tissue: HeLa Cell Lysate
Antibody Dilution: 1.0 μ g/ml

Host: Rabbit; Target Name: WDR61; Sample Tissue: HeLa Whole cell lysates; Antibody Dilution: 1.0 μ g/ml; WDR61 is strongly supported by BioGPS gene expression data to be expressed in Human HeLa cells