

Product datasheet for **TA330824**

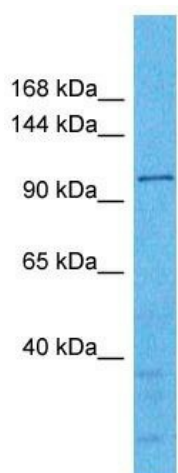
WDR59 Rabbit Polyclonal Antibody

Product data:

Product Type:	Primary Antibodies
Applications:	WB
Recommended Dilution:	WB
Reactivity:	Human
Host:	Rabbit
Isotype:	IgG
Clonality:	Polyclonal
Immunogen:	The immunogen for Anti-WDR59 antibody is: synthetic peptide directed towards the C-terminal region of Human WDR59. Synthetic peptide located within the following region: TRSEKEQVSISSEFYKERSRRWKSREGSDSGNRQIKAAGKVIIQDIAC
Formulation:	Liquid. Purified antibody supplied in 1x PBS buffer with 0.09% (w/v) sodium azide and 2% sucrose. <i>Note that this product is shipped as lyophilized powder to China customers.</i>
Conjugation:	Unconjugated
Storage:	Store at -20°C as received.
Stability:	Stable for 12 months from date of receipt.
Predicted Protein Size:	109 kDa
Gene Name:	WD repeat domain 59
Database Link:	NP_085058 Entrez Gene 79726 Human Q6PJI9
Background:	The function of this protein remains unknown.
Synonyms:	FP977
Note:	Human: 100%; Dog: 93%; Pig: 93%; Rat: 93%; Horse: 93%; Mouse: 93%; Bovine: 93%; Guinea pig: 93%; Rabbit: 86%



[View online »](#)

Product images:

Host: Rabbit

Target Name: WDR59

Sample Tissue: MCF7 Cell Lysate

Antibody Dilution: 1.0 μ g/ml

Host: Rabbit; Target Name: WDR59; Sample Tissue: MCF7 Whole Cell lysates; Antibody Dilution: 1.0 μ g/ml; WDR59 is strongly supported by BioGPS gene expression data to be expressed in Human MCF7 cells