

Product datasheet for **TA330823**

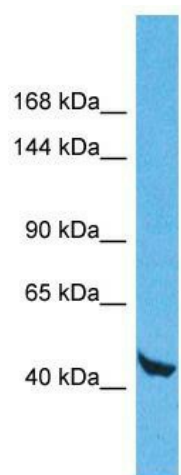
WDR59 Rabbit Polyclonal Antibody

Product data:

Product Type:	Primary Antibodies
Applications:	WB
Recommended Dilution:	WB
Reactivity:	Human
Host:	Rabbit
Isotype:	IgG
Clonality:	Polyclonal
Immunogen:	The immunogen for Anti-WDR59 antibody is: synthetic peptide directed towards the N-terminal region of Human WDR59. Synthetic peptide located within the following region: APMKIRTEAPGNLRLYSGSPTRSEKEQVSISFYKERSRRWKSREGS
Formulation:	Liquid. Purified antibody supplied in 1x PBS buffer with 0.09% (w/v) sodium azide and 2% sucrose.
Conjugation:	Unconjugated
Storage:	Store at -20°C as received.
Stability:	Stable for 12 months from date of receipt.
Predicted Protein Size:	46 kDa
Gene Name:	WD repeat domain 59
Database Link:	NP_085058 Entrez Gene 79726 Human Q6PJI9
Background:	The function of this protein remains unknown.
Synonyms:	FP977
Note:	Dog: 100%; Pig: 100%; Rat: 100%; Horse: 100%; Human: 100%; Mouse: 100%; Bovine: 100%; Rabbit: 100%; Guinea pig: 100%; Zebrafish: 79%



[View online »](#)

Product images:

Host: Rabbit; Target Name: WDR59; Sample Tissue: 293T Whole Cell lysates; Antibody Dilution: 1.0ug/ml; There is BioGPS gene expression data showing that WDR59 is expressed in HEK293T