

## Product datasheet for TA330822

### WDR31 Rabbit Polyclonal Antibody

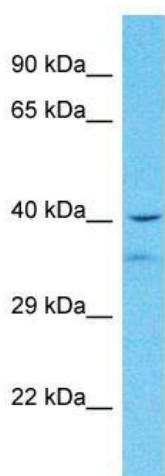
#### Product data:

Product Type:	Primary Antibodies
Applications:	WB
Recommended Dilution:	WB
Reactivity:	Human
Host:	Rabbit
Isotype:	IgG
Clonality:	Polyclonal
Immunogen:	The immunogen for Anti-WDR31 antibody is: synthetic peptide directed towards the middle region of Human WDR31. Synthetic peptide located within the following region: MWDLHGSSQPRQQLCGHAMVVTGLAVSPDSSLCTGSRDNTLLLWDVVTG
Formulation:	Liquid. Purified antibody supplied in 1x PBS buffer with 0.09% (w/v) sodium azide and 2% sucrose.
Conjugation:	Unconjugated
Storage:	Store at -20°C as received.
Stability:	Stable for 12 months from date of receipt.
Predicted Protein Size:	40 kDa
Gene Name:	WD repeat domain 31
Database Link:	<a href="#">NP_660284</a> <a href="#">Entrez Gene 114987 Human</a> <a href="#">Q8NA23</a>
Background:	This gene encodes a member of the WD repeat protein family. WD repeats are minimally conserved regions of approximately 40 amino acids typically bracketed by gly-his and trp-aspartate (GH-WD), which may facilitate formation of heterotrimeric or multiprotein complexes. Members of this family are involved in a variety of cellular processes, including cell cycle progression, signal transduction, apoptosis, and gene regulation. Multiple alternatively spliced transcript variants encoding distinct isoforms have been found for this gene but the biological validity of some variants has not been determined.
Synonyms:	FLJ35921


[View online »](#)

**Note:** Pig: 100%; Human: 100%; Guinea pig: 100%; Rat: 92%; Bovine: 82%; Mouse: 79%

### Product images:



Host: Rabbit

Target Name: WDR31

Sample Tissue: ACHN Cell Lysate

Antibody Dilution: 1.0µg/ml

Host: Rabbit; Target Name: WDR31; Sample Tissue: ACHN Whole Cell lysates; Antibody Dilution: 1.0ug/ml