

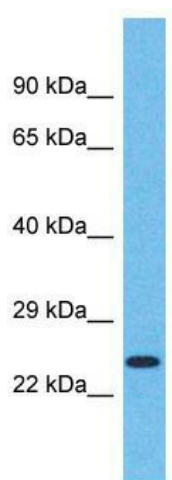
Product datasheet for TA330821

CCDC74B Rabbit Polyclonal Antibody

Product data:

Product Type:	Primary Antibodies
Applications:	WB
Recommended Dilution:	WB
Reactivity:	Human
Host:	Rabbit
Isotype:	IgG
Clonality:	Polyclonal
Immunogen:	The immunogen for Anti-CCDC74B antibody is: synthetic peptide directed towards the middle region of Human CCDC74B. Synthetic peptide located within the following region: AINSSTRLGSGGTQDDLRYKLIMNQTSQKKDSLSTSSFQSVKSISNSGKA
Formulation:	Liquid. Purified antibody supplied in 1x PBS buffer with 0.09% (w/v) sodium azide and 2% sucrose.
Conjugation:	Unconjugated
Storage:	Store at -20°C as received.
Stability:	Stable for 12 months from date of receipt.
Predicted Protein Size:	22 kDa
Gene Name:	coiled-coil domain containing 74B
Database Link:	NP_997193 Entrez Gene 91409 Human Q96LY2
Background:	The function of this protein remains unknown.
Synonyms:	DKFZp434E2321
Note:	Human: 100%


[View online »](#)

Product images:

Host: Rabbit; Target Name: CCDC74B; Sample
Tissue: Fetal Lung lysates; Antibody Dilution:
1.0ug/ml