

## Product datasheet for **TA330817**

### UTP11L (UTP11) Rabbit Polyclonal Antibody

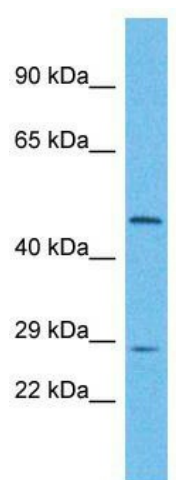
#### Product data:

Product Type:	Primary Antibodies
Applications:	WB
Recommended Dilution:	WB
Reactivity:	Human
Host:	Rabbit
Isotype:	IgG
Clonality:	Polyclonal
Immunogen:	The immunogen for Anti-UTP11L antibody is: synthetic peptide directed towards the N-terminal region of Human UTP11L. Synthetic peptide located within the following region: AKSRQREHRERSQPGFRKHLGLLEKKKDYKLRAADDYRKKQEYLKALRKKA
Formulation:	Liquid. Purified antibody supplied in 1x PBS buffer with 0.09% (w/v) sodium azide and 2% sucrose. <i>Note that this product is shipped as lyophilized powder to China customers.</i>
Conjugation:	Unconjugated
Storage:	Store at -20°C as received.
Stability:	Stable for 12 months from date of receipt.
Predicted Protein Size:	30 kDa
Gene Name:	UTP11, small subunit processome component homolog (S. cerevisiae)
Database Link:	<a href="#">NP_057121</a> <a href="#">Entrez Gene 51118 Human</a> <a href="#">Q9Y3A2</a>
Background:	UTP11L is involved in nucleolar processing of pre-18S ribosomal RNA.
Synonyms:	CGI-94; CGI94; UTP11L
Note:	Rat: 100%; Horse: 100%; Human: 100%; Bovine: 100%; Dog: 93%; Pig: 93%; Guinea pig: 93%; Yeast: 85%; Mouse: 79%; Zebrafish: 77%



[View online »](#)

## Product images:



Host: Rabbit; Target Name: UTP11L; Sample Tissue: HeLa Whole Cell lysates; Antibody Dilution: 1.0ug/ml; UTP11L is supported by BioGPS gene expression data to be expressed in HeLa