

## Product datasheet for **TA330816**

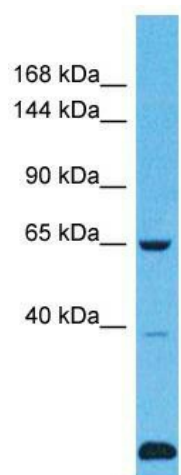
### USP43 Rabbit Polyclonal Antibody

#### Product data:

Product Type:	Primary Antibodies
Applications:	WB
Recommended Dilution:	WB
Reactivity:	Human
Host:	Rabbit
Isotype:	IgG
Clonality:	Polyclonal
Immunogen:	The immunogen for Anti-USP43 antibody is: synthetic peptide directed towards the C-terminal region of Human USP43. Synthetic peptide located within the following region: KSSPPSPYMGFSGNSKDSRRGTSELDRLQGTLTLRSVFRKKENRRNER
Formulation:	Liquid. Purified antibody supplied in 1x PBS buffer with 0.09% (w/v) sodium azide and 2% sucrose.
Conjugation:	Unconjugated
Storage:	Store at -20°C as received.
Stability:	Stable for 12 months from date of receipt.
Predicted Protein Size:	69 kDa
Gene Name:	ubiquitin specific peptidase 43
Database Link:	<a href="#">NP_694942</a> <a href="#">Entrez Gene 124739 Human</a> <a href="#">Q70EL4</a>
Background:	USP43 may recognize and hydrolyze the peptide bond at the C-terminal Gly of ubiquitin. It is involved in the processing of poly-ubiquitin precursors as well as that of ubiquitinated proteins.
Synonyms:	FLJ30626
Note:	Human: 100%
Protein Families:	Druggable Genome


[View online »](#)

## Product images:



Host: Rabbit; Target Name: USP43; Sample  
Tissue: Fetal Lung lysates; Antibody Dilution:  
1.0ug/ml