

## Product datasheet for **TA330813**

### UCKL1 Rabbit Polyclonal Antibody

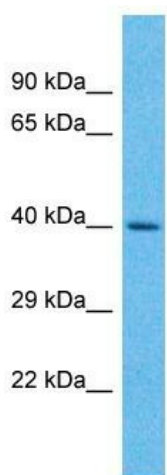
#### Product data:

Product Type:	Primary Antibodies
Applications:	WB
Recommended Dilution:	WB
Reactivity:	Human
Host:	Rabbit
Isotype:	IgG
Clonality:	Polyclonal
Immunogen:	The immunogen for Anti-UCKL1 antibody is: synthetic peptide directed towards the N-terminal region of Human UCKL1. Synthetic peptide located within the following region: PSPTSPPTARDTPGRQAEKSETACEDRSNAESLDRLLPPVGTGRSPRKRT
Formulation:	Liquid. Purified antibody supplied in 1x PBS buffer with 0.09% (w/v) sodium azide and 2% sucrose. <i>Note that this product is shipped as lyophilized powder to China customers.</i>
Conjugation:	Unconjugated
Storage:	Store at -20°C as received.
Stability:	Stable for 12 months from date of receipt.
Predicted Protein Size:	43 kDa
Gene Name:	uridine-cytidine kinase 1 like 1
Database Link:	<a href="#">NP_060329</a> <a href="#">Entrez Gene 54963 Human</a> <a href="#">Q9NWZ5</a>
Background:	UCKL1 may contribute to UTP accumulation needed for blast transformation and proliferation.
Synonyms:	UCK1L; URKL1
Note:	Human: 100%; Mouse: 86%
Protein Families:	Druggable Genome
Protein Pathways:	Drug metabolism - other enzymes, Metabolic pathways, Pyrimidine metabolism



[View online »](#)

## Product images:



Host: Rabbit

Target Name: UCKL1

Sample Tissue: 721\_B Cell Lysate

Antibody Dilution: 1.0µg/ml

Host: Rabbit; Target Name: UCKL1; Sample Tissue: 721\_B Whole cell lysates; Antibody Dilution: 1.0ug/ml; UCKL1 is supported by BioGPS gene expression data to be expressed in 721\_B