

## Product datasheet for **TA330812**

### TXNDC6 (NME9) Rabbit Polyclonal Antibody

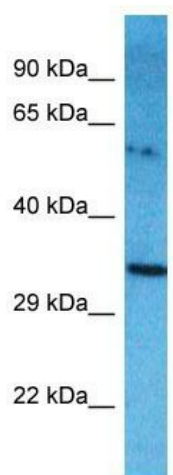
#### Product data:

Product Type:	Primary Antibodies
Applications:	WB
Recommended Dilution:	WB
Reactivity:	Human
Host:	Rabbit
Isotype:	IgG
Clonality:	Polyclonal
Immunogen:	The immunogen for Anti-NME9 antibody is: synthetic peptide directed towards the middle region of Human NME9. Synthetic peptide located within the following region: AEGRRERKVIKDEALSDEDECVSHGKNNGEDEDMVSSERTCTLAIKPDVA
Formulation:	Liquid. Purified antibody supplied in 1x PBS buffer with 0.09% (w/v) sodium azide and 2% sucrose. <i>Note that this product is shipped as lyophilized powder to China customers.</i>
Conjugation:	Unconjugated
Storage:	Store at -20°C as received.
Stability:	Stable for 12 months from date of receipt.
Predicted Protein Size:	36 kDa
Gene Name:	NME/NM23 family member 9
Database Link:	<a href="#">NP_835231</a> <a href="#">Entrez Gene 347736 Human</a> <a href="#">Q86XW9</a>
Background:	NME9 may be a regulator of microtubule physiology.
Synonyms:	NM23-H9; TXL-2; TXL2; TXNDC6
Note:	Human: 100%; Bovine: 79%
Protein Families:	Druggable Genome



[View online »](#)

## Product images:



Host: Rabbit  
Target Name: NME9  
Sample Tissue: A549 Cell Lysate  
Antibody Dilution: 1.0 $\mu$ g/ml

Host: Rabbit; Target Name: NME9; Sample Tissue:  
A549 Whole Cell lysates; Antibody Dilution:  
1.0ug/ml