

Product datasheet for **TA330811**

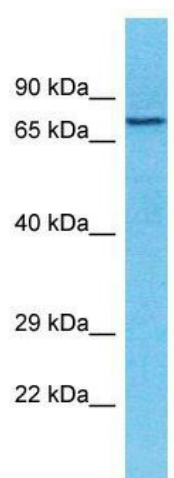
TXLNB Rabbit Polyclonal Antibody

Product data:

Product Type:	Primary Antibodies
Applications:	WB
Recommended Dilution:	WB
Reactivity:	Human
Host:	Rabbit
Isotype:	IgG
Clonality:	Polyclonal
Immunogen:	The immunogen for Anti-TXLNB antibody is: synthetic peptide directed towards the N-terminal region of Human TXLNB. Synthetic peptide located within the following region: ARASEQPENAESPDNEDGDCEETTEEAGREPVASGEPPTVKEPVSNKEQK
Formulation:	Liquid. Purified antibody supplied in 1x PBS buffer with 0.09% (w/v) sodium azide and 2% sucrose. <i>Note that this product is shipped as lyophilized powder to China customers.</i>
Conjugation:	Unconjugated
Storage:	Store at -20°C as received.
Stability:	Stable for 12 months from date of receipt.
Predicted Protein Size:	76 kDa
Gene Name:	taxilin beta
Database Link:	NP_694967 Entrez Gene 167838 Human Q8N3L3
Background:	TXLNB promotes motor nerve regeneration. It may be involved in intracellular vesicle traffic.
Synonyms:	C6orf198; dJ522B19.2; LST001; MDP77
Note:	Human: 100%; Dog: 86%; Pig: 85%; Rat: 85%; Bovine: 79%; Mouse: 77%



[View online »](#)

Product images:

Host: Rabbit; Target Name: TXLNB; Sample
Tissue: MCF7 Whole Cell lysates; Antibody
Dilution: 1.0ug/ml