

Product datasheet for **TA330810**

TUBA3D Rabbit Polyclonal Antibody

Product data:

Product Type:	Primary Antibodies
Applications:	WB
Recommended Dilution:	WB
Reactivity:	Human
Host:	Rabbit
Isotype:	IgG
Clonality:	Polyclonal
Immunogen:	The immunogen for Anti-TUBA3D antibody is: synthetic peptide directed towards the C-terminal region of Human TUBA3D. Synthetic peptide located within the following region: YAKRAFDVHWYVGGEGMEEGEFSEAREDLAALEKDYEEVGVDSVEAEAEERGE
Formulation:	Liquid. Purified antibody supplied in 1x PBS buffer with 0.09% (w/v) sodium azide and 2% sucrose.
Conjugation:	Unconjugated
Storage:	Store at -20°C as received.
Stability:	Stable for 12 months from date of receipt.
Predicted Protein Size:	50 kDa
Gene Name:	tubulin alpha 3d
Database Link:	NP_525125 Entrez Gene 113457 Human P0DPH7



[View online »](#)

Background:

Microtubules of the eukaryotic cytoskeleton perform essential and diverse functions and are composed of a heterodimer of alpha and beta tubulin. The genes encoding these microtubule constituents are part of the tubulin superfamily, which is composed of six distinct families. Genes from the alpha, beta and gamma tubulin families are found in all eukaryotes. The alpha and beta tubulins represent the major components of microtubules, while gamma tubulin plays a critical role in the nucleation of microtubule assembly. There are multiple alpha and beta tubulin genes and they are highly conserved among and between species. This gene is an alpha tubulin gene that encodes a protein 99% identical to the mouse testis-specific Tuba3 and Tuba7 gene products. This gene is located in the 13q11 region, which is associated with the genetic diseases Clouston hidrotic ectodermal dysplasia and Kabuki syndrome.

Synonyms:

H2-ALPHA

Note:

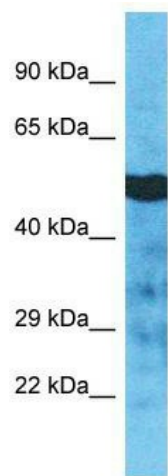
Dog: 100%; Pig: 100%; Rat: 100%; Horse: 100%; Human: 100%; Mouse: 100%; Sheep: 100%; Bovine: 100%; Rabbit: 100%; Zebrafish: 100%; Guinea pig: 100%

Protein Families:

Druggable Genome

Protein Pathways:

Gap junction, Pathogenic Escherichia coli infection

Product images:

Host: Rabbit; Target Name: TUBA3D; Sample Tissue: Jurkat Whole Cell lysates; Antibody Dilution: 1.0ug/ml; TUBA3D is supported by BioGPS gene expression data to be expressed in Jurkat