

Product datasheet for **TA330809**

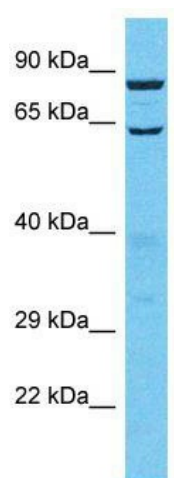
TTL13P Rabbit Polyclonal Antibody

Product data:

Product Type:	Primary Antibodies
Applications:	WB
Recommended Dilution:	WB
Reactivity:	Human
Host:	Rabbit
Isotype:	IgG
Clonality:	Polyclonal
Immunogen:	The immunogen for Anti-TTL13 antibody is: synthetic peptide directed towards the C-terminal region of Human TTL13. Synthetic peptide located within the following region: LLC DAMTLVNLRGCDKRKVM EEDKRRVKERL FQCYRQPRESRKEKTESSH
Formulation:	Liquid. Purified antibody supplied in 1x PBS buffer with 0.09% (w/v) sodium azide and 2% sucrose. <i>Note that this product is shipped as lyophilized powder to China customers.</i>
Conjugation:	Unconjugated
Storage:	Store at -20°C as received.
Stability:	Stable for 12 months from date of receipt.
Predicted Protein Size:	89 kDa
Gene Name:	tubulin tyrosine ligase like 13, pseudogene
Database Link:	NP_001025135 Entrez Gene 440307 Human
Background:	TTL13 is a polyglutamylase which preferentially modifies alpha-tubulin. It is involved in the side-chain elongation step of the polyglutamylation reaction rather than in the initiation step.
Synonyms:	FLJ46079; MGC33417
Note:	Dog: 100%; Human: 100%; Pig: 93%; Horse: 93%; Rabbit: 93%; Guinea pig: 93%; Mouse: 86%; Rat: 79%; Zebrafish: 77%



[View online »](#)

Product images:

Host: Rabbit; Target Name: TTLL13; Sample
Tissue: 721_B Whole Cell lysates; Antibody
Dilution: 1.0ug/ml