

Product datasheet for **TA330808**

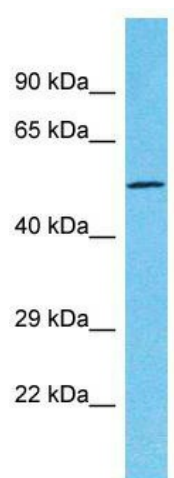
TTC39C Rabbit Polyclonal Antibody

Product data:

Product Type:	Primary Antibodies
Applications:	WB
Recommended Dilution:	WB
Reactivity:	Human
Host:	Rabbit
Isotype:	IgG
Clonality:	Polyclonal
Immunogen:	The immunogen for Anti-TTC39C antibody is: synthetic peptide directed towards the middle region of Human TTC39C. Synthetic peptide located within the following region: NLLKIINLLGFPDRLQGLSSLMYASESKDMKAPLATLALLWYHTVVRPF
Formulation:	Liquid. Purified antibody supplied in 1x PBS buffer with 0.09% (w/v) sodium azide and 2% sucrose.
Conjugation:	Unconjugated
Storage:	Store at -20°C as received.
Stability:	Stable for 12 months from date of receipt.
Predicted Protein Size:	59 kDa
Gene Name:	tetratricopeptide repeat domain 39C
Database Link:	NP_694943 Entrez Gene 125488 Human Q8N584
Background:	The function of this protein remains unknown.
Synonyms:	C18orf17; HsT2697
Note:	Dog: 100%; Pig: 100%; Rat: 100%; Horse: 100%; Human: 100%; Mouse: 100%; Bovine: 100%; Rabbit: 100%; Zebrafish: 100%; Guinea pig: 100%



[View online »](#)

Product images:

Host: Rabbit; Target Name: TTC39C; Sample Tissue: Fetal Lung lysates; Antibody Dilution: 1.0ug/ml