

Product datasheet for **TA330807**

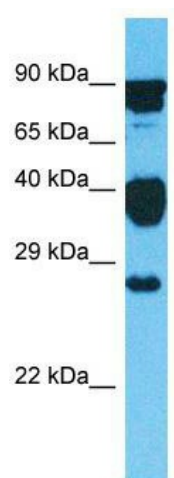
GLIPR1L2 Rabbit Polyclonal Antibody

Product data:

Product Type:	Primary Antibodies
Applications:	WB
Recommended Dilution:	WB
Reactivity:	Human
Host:	Rabbit
Isotype:	IgG
Clonality:	Polyclonal
Immunogen:	The immunogen for Anti-GLIPR1L2 antibody is: synthetic peptide directed towards the C-terminal region of Human GLIPR1L2. Synthetic peptide located within the following region: IFTPEESEAGNEEEEEKEEEMEMEIMEMEEKEEREEEEETQKE
Formulation:	Liquid. Purified antibody supplied in 1x PBS buffer with 0.09% (w/v) sodium azide and 2% sucrose. <i>Note that this product is shipped as lyophilized powder to China customers.</i>
Conjugation:	Unconjugated
Storage:	Store at -20°C as received.
Stability:	Stable for 12 months from date of receipt.
Predicted Protein Size:	26 kDa
Gene Name:	GLI pathogenesis-related 1 like 2
Database Link:	NP_689649 Entrez Gene 144321 Human Q4G1C9
Background:	This gene encodes a member of the cysteine-rich secretory protein, antigen 5, and pathogenesis-related 1 superfamily. Members of this family have roles in a variety of processes, including cancer and immune defense. This gene is located in a cluster with two related genes on chromosome 12. Alternative splicing results in multiple transcript variants.
Synonyms:	MGC39497
Note:	Human: 100%; Yeast: 100%; Rabbit: 83%; Dog: 77%; Rat: 77%; Zebrafish: 75%



[View online »](#)

Product images:

Host: Rabbit; Target Name: GLIPR1L2; Sample
Tissue: HeLa Whole Cell lysates; Antibody Dilution:
1.0ug/ml