

Product datasheet for **TA330806**

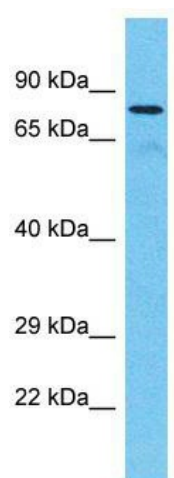
TTC30A Rabbit Polyclonal Antibody

Product data:

Product Type:	Primary Antibodies
Applications:	WB
Recommended Dilution:	WB
Reactivity:	Human
Host:	Rabbit
Isotype:	IgG
Clonality:	Polyclonal
Immunogen:	The immunogen for Anti-TTC30A antibody is: synthetic peptide directed towards the C-terminal region of Human TTC30A. Synthetic peptide located within the following region: IEKEEQLSYDDPNRKMVHLCIVNLVIGTLYCAKGNVEFGISRVIKSLEP
Formulation:	Liquid. Purified antibody supplied in 1x PBS buffer with 0.09% (w/v) sodium azide and 2% sucrose. <i>Note that this product is shipped as lyophilized powder to China customers.</i>
Conjugation:	Unconjugated
Storage:	Store at -20°C as received.
Stability:	Stable for 12 months from date of receipt.
Predicted Protein Size:	76 kDa
Gene Name:	tetratricopeptide repeat domain 30A
Database Link:	NP_689488 Entrez Gene 92104 Human Q86WT1
Background:	TTC30A is required for polyglutamylation of axonemal tubulin. It plays a role in anterograde intraflagellar transport (IFT), the process by which cilia precursors are transported from the base of the cilium to the site of their incorporation at the tip.
Synonyms:	IFT70A
Note:	Human: 100%; Dog: 79%; Rat: 79%; Bovine: 79%; Rabbit: 79%



[View online »](#)

Product images:

Host: Rabbit; Target Name: TTC30A; Sample
Tissue: Fetal Kidney lysates; Antibody Dilution:
1.0ug/ml