

Product datasheet for **TA330805**

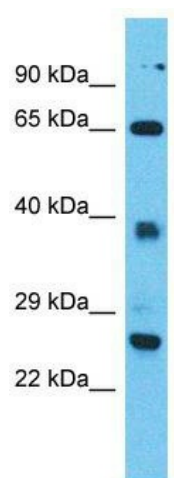
TTC26 Rabbit Polyclonal Antibody

Product data:

Product Type:	Primary Antibodies
Applications:	WB
Recommended Dilution:	WB
Reactivity:	Human
Host:	Rabbit
Isotype:	IgG
Clonality:	Polyclonal
Immunogen:	The immunogen for Anti-TTC26 antibody is: synthetic peptide directed towards the N-terminal region of Human TTC26. Synthetic peptide located within the following region: VGRGVQHTDKRKKKGRKIPKLELLSKRDFTGAILLLEFKRHVGEEDT
Formulation:	Liquid. Purified antibody supplied in 1x PBS buffer with 0.09% (w/v) sodium azide and 2% sucrose. <i>Note that this product is shipped as lyophilized powder to China customers.</i>
Conjugation:	Unconjugated
Storage:	Store at -20°C as received.
Stability:	Stable for 12 months from date of receipt.
Predicted Protein Size:	64 kDa
Gene Name:	tetratricopeptide repeat domain 26
Database Link:	NP_079202 Entrez Gene 79989 Human A0AVF1
Background:	TTC26 may play a critical role in ciliogenesis and normal cilia function.
Synonyms:	dyf-13; DYF13; IFT56
Note:	Dog: 100%; Rat: 100%; Horse: 100%; Human: 100%; Mouse: 100%; Bovine: 100%; Pig: 92%; Guinea pig: 83%



[View online »](#)

Product images:

Host: Rabbit; Target Name: TTC26; Sample
Tissue: Jurkat Whole Cell lysates; Antibody
Dilution: 1.0ug/ml